



ACE Preparation Course:

INSPECTION AND IDENTIFICATION

OCCASIONAL INVADER BIOLOGY AND IDENTIFICATION



What are occasional invaders?

Occasional invaders are

- normally found outdoors
- invade homes temporarily
- over-wintering shelter
- forage for food/water
- accidentally wander into homes
- shelter from drought, heat, cold, rain

Occasional invaders often pose challenge for identifier because they are less frequently encountered



“Scuds”: amphipods that occasionally enter homes after rainy weather

Crickets

house cricket

field cricket

camel cricket



Hemipterans

Drawn in for overwintering shelter or by exterior lighting

Examples:

- boxelder bug
- maples and box elder trees
- Plant and seed bugs





Hemipterans

cone nose bugs

bat bugs, bird bugs

nipple gall makers

Spiders

spider bites are rare in humans

most spiders in home feed on small insects

- reduce food source and you'll reduce spiders

Vacuuming, webster mop



Soil dwelling accidental invaders

Earwigs

Sowbugs

Springtails (Collembola)



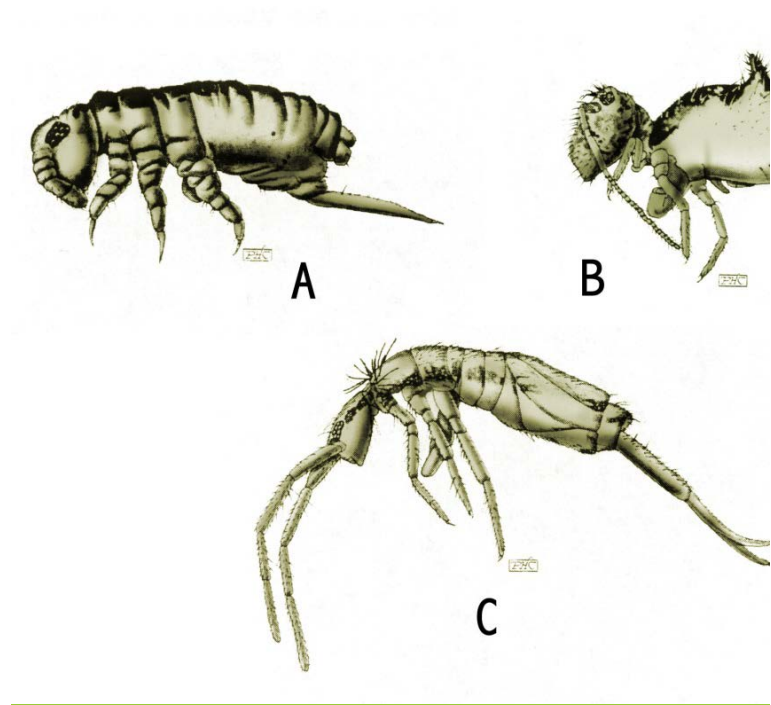
Springtails (Order Collembola)

common in all areas and seasons

breed in turf, mulch, soil

minute (1-2 mm)

hopping motion



Millipedes and centipedes

millipedes

- herbivores
- can be present in large numbers
- Look for sources of moist organic matter

centipedes

- predators
- less abundant



Wasps

Paper wasps

cricket-hunting wasps

parasitoid wasps

- Ensign wasp
- Chalcid wasps (stored product pests, fly parasites)



Beetles

multicolored Asian lady beetle

Carabid (ground) beetles

elm leaf beetles



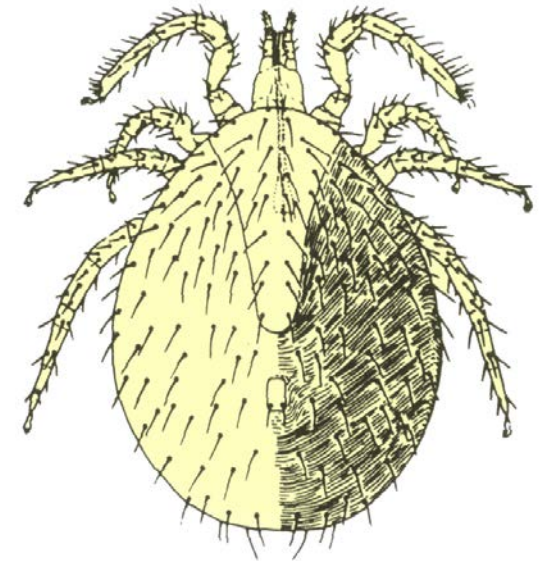
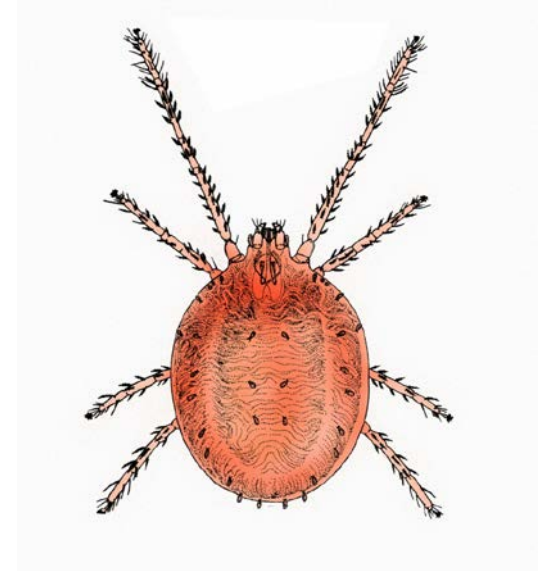
Mites

clover mites

- Outdoor mite feeds on clover and weeds

bird and rodent mites

- Nest parasites of rodents, birds
- May bite humans





When are multicolored Asian lady beetles likely to become pests?

during hot dry spells
in the summer

during mating season

when the weather
starts to turn cold

lady beetles are not
pests



Seed-feeding Hemipterans are sometimes attracted to homes for what reason?

to supplement their
diet with blood

water

over-wintering
shelter

attracted to lights



**Centipedes have two pair of legs per body segment, while
Millipedes have one pair of legs per body segment**

True

False

UNLESS OTHERWISE INDICATED,
PHOTOS BY MIKE MERCHANT

Questions